



## Advanced DWG to PDF Workshop Help

© 2008 DWGPDF.net Inc.

**Note:**

To change the product logo for your own print manual or PDF, click "Tools > Manual Designer" and modify the print manual template.



# Title page 1

Use this page to introduce the product

---

*by DWGPDF.net Inc.*

*This is "Title Page 1" - you may use this page to introduce your product, show title, author, copyright, company logos, etc.*

*This page intentionally starts on an odd page, so that it is on the right half of an open book from the readers point of view. This is the reason why the previous page was blank (the previous page is the back side of the cover)*

# Advanced DWG to PDF Workshop Help

© 2008 DWGPDF.net Inc.

All rights reserved. No parts of this work may be reproduced in any form or by any means - graphic, electronic, or mechanical, including photocopying, recording, taping, or information storage and retrieval systems - without the written permission of the publisher.

Products that are referred to in this document may be either trademarks and/or registered trademarks of the respective owners. The publisher and the author make no claim to these trademarks.

While every precaution has been taken in the preparation of this document, the publisher and the author assume no responsibility for errors or omissions, or for damages resulting from the use of information contained in this document or from the use of programs and source code that may accompany it. In no event shall the publisher and the author be liable for any loss of profit or any other commercial damage caused or alleged to have been caused directly or indirectly by this document.

Printed: 十月 2008 in (wherever you are located)

## **Publisher**

...enter name...

## **Managing Editor**

...enter name...

## **Technical Editors**

...enter name...

...enter name...

## **Cover Designer**

...enter name...

## **Team Coordinator**

...enter name...

## **Production**

...enter name...

## **Special thanks to:**

*All the people who contributed to this document, to mum and dad and grandpa, to my sisters and brothers and mothers in law, to our secretary Kathrin, to the graphic artist who created this great product logo on the cover page (sorry, don't remember your name at the moment but you did a great work), to the pizza service down the street (your daily Capricciosas saved our lives), to the copy shop where this document will be duplicated, and and and...*

*Last not least, we want to thank EC Software who wrote this great help tool called HELP & MANUAL which printed this document.*

# Table of Contents

Foreword	7
<b>Part I Welcome to Advanced DWG to PDF Workshop</b>	<b>10</b>
1 Introduction .....	10
2 Convert DWG/DXF to PDF .....	11
3 Set Options .....	11
<b>Part II How to Register</b>	<b>14</b>
<b>Part III Other Products</b>	<b>16</b>
<b>Part IV Frequently Asked Questions</b>	<b>18</b>
<b>Part V Contact/Feedback</b>	<b>20</b>
<b>Part VI Copyright</b>	<b>22</b>
<b>Part VII End User License Agreement</b>	<b>24</b>
<b>Index</b>	<b>0</b>



# Foreword

This is just another title page  
placed between table of contents  
and topics





# Top Level Intro

This page is printed before a new  
top-level chapter starts

# Part



# 1 Welcome to Advanced DWG to PDF Workshop

## 1.1 Introduction

### Introduction

Advanced DWG to PDF Workshop is a full featured **DWG to PDF converter** that allows you to convert DWG and DXF to vector PDF without the need of AutoCAD.

### Key Features

- Batch convert an unlimited number of DWG/DXF files to high quality PDF.

- Stand-alone utility - AutoCAD NOT required.

- Versatile and customizable output. Enables you to choose the Size, Quality, Output Color of the PDF file.

- SHX, Xref and Line width support.

- Supports paper space and model space.

- Automatically create bookmarks in your PDF.

- Support for custom page sizes.

- Supports every version of DWG/DXF files (Supports R2.5/2.6, R9, R10, R12, R13, R14, R2000/2002, R2004/2005/2006, 2007, 2008, ... formats).

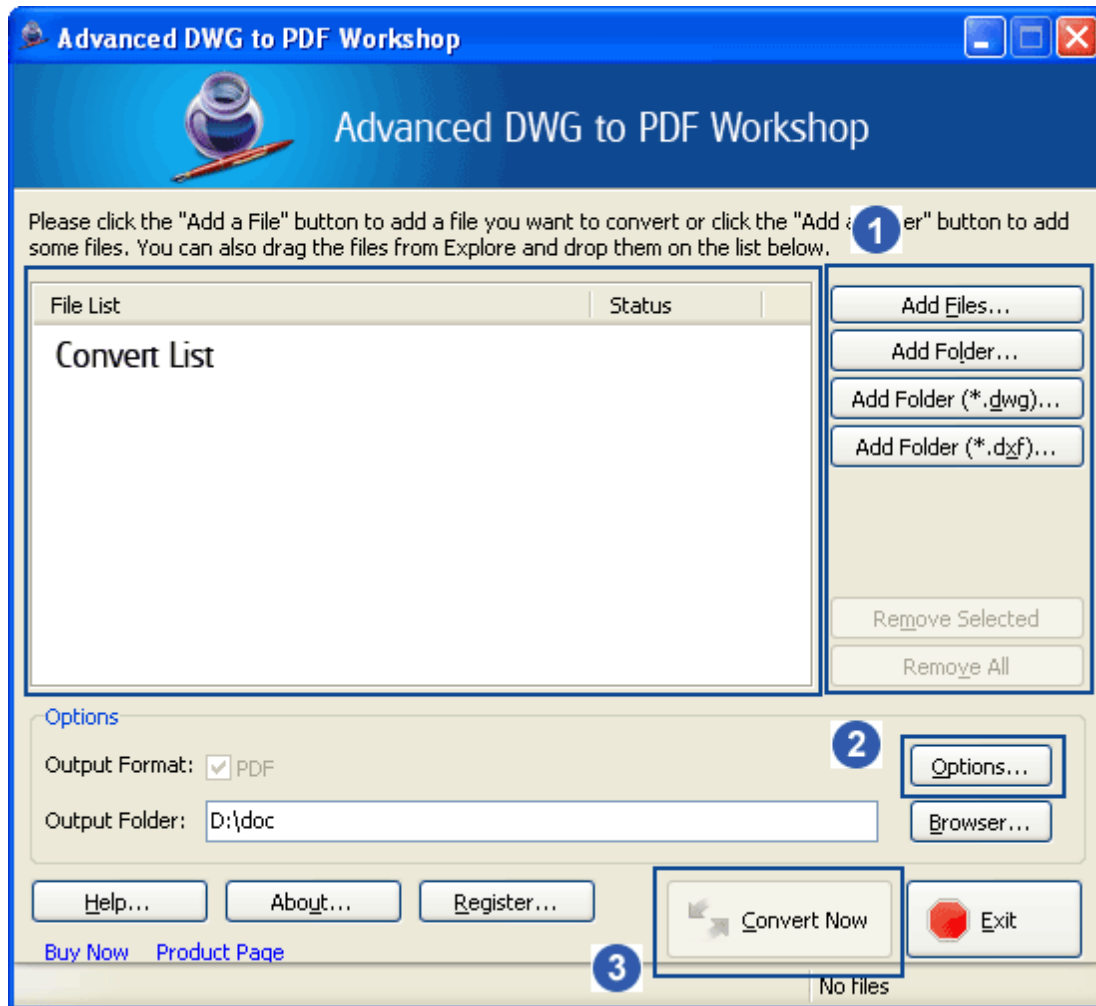
- Very easy to use.

- ...

### Command line support

Advanced DWG to PDF Workshop is available in "Advanced DWG to PDF Workshop" and "Advanced DWG to PDF Workshop Pro" versions. Only the "Pro" version supports command line, if you need command line support, please contract us.

## 1.2 Convert DWG/DXF to PDF



### Step 1 Add Files:

Click the "**Add Files**" button to add files you want to convert or click the "**Add Folder**" button to add some files. You can also drag the files from Explorer and drop them on the Convert List.

### Step 2 Set options and specify an output folder (or a file).

### Step 3 Click the "Convert Now" button.

## 1.3 Set Options

### Output Sizes and Colors Tab

**Paper size (Standard / Custom):** Allows you to set the size of the paper. Portrait and landscape mode can be easily switched by exchanging the width and height values.

**PDF Quality:** Allows you to set the quality of the PDF file.

**Output:** Allows you to choose between "One PDF per layout", "All drawings combined into one PDF file" and "One PDF per drawing".

**Overwrite existing:** Allows you to choose between "Replace original" and "Rename (automatically increment the filename)".

### SHX and XRef Directories Tab

If the text quality is not satisfactory, please add the SHX font directories to the SHX font directories list. If the drawing has an XRef, please add the XRef directories to the XRef directories list. If you have any questions about XRef, please contact [support@dwgpdf.net](mailto:support@dwgpdf.net).

### Output Layout Tab

**Model space:** Output the model space.

**All layouts:** Output all layouts.

**Output by layout name:** Output the specifically layout.

**All Paper spaces:** Output all paper spaces.

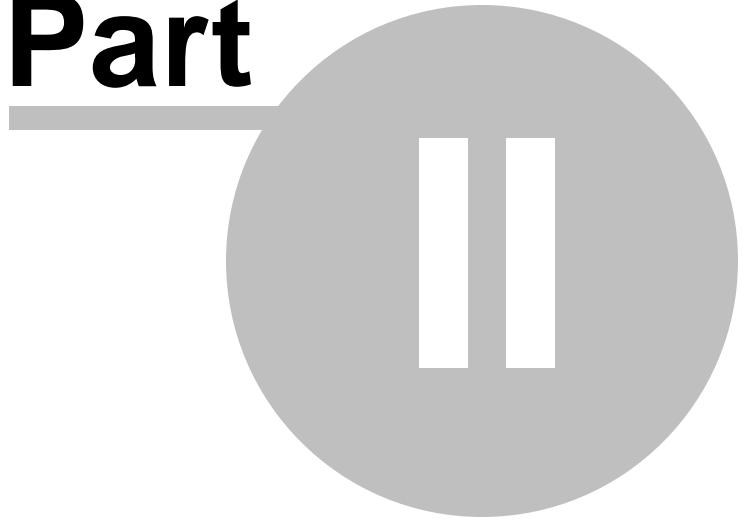
### Line Width (Pen Width) Tab

Set the line width of your PDF document.

# Top Level Intro

This page is printed before a new  
top-level chapter starts

# Part



## 2 How to Register

### **Advanced DWG to PDF Workshop is a shareware program.**

You are limited to 10 times of use for an unregistered version. If you find it useful and need to overcome the limits of the unregistered version, you can buy a license (one license per computer) to use the full version of Advanced DWG to PDF Workshop.

**Buy Now**

### **How much is it?**

The registration fee for Advanced DWG to PDF Workshop as low as US \$69.95. The registration fee includes lifetime technical support and lifetime free future upgrades.

### **There are several ways to order:**

Credit Cards (Recommended, it can be processed within one hour.)

Credit Cards (Phone order, Fax order).

Postal Mail with Credit Card, Check or Cash.

(Accepts Visa, MasterCard, American Express, Discover/Novus, Eurocard, Eurocheques, ...)

PayPal

### **What happens after I send in the order?**

After you buy, ***you will receive your Registration Code in an e-mail message.*** The Registration Code you receive will work with the current release and all future versions of Advanced DWG to PDF Workshop. You can also select the CD-ROM delivery option when you place your order on our website.

### **Multiple License Discounts**

There are discounts available when purchasing multiple licenses and the discount structure is detailed on <http://www.dwgpdf.net/order.html>.

**Buy Now**

Please visit [www.dwgpdf.net](http://www.dwgpdf.net) for further details on purchasing and the latest information about prices and discounts!

If you have any questions about order, please feel free to contact us at any time. E-mail: [sales@dwgpdf.net](mailto:sales@dwgpdf.net)

# Top Level Intro

This page is printed before a new  
top-level chapter starts

# Part



### 3 Other Products

**The following features are planned for future releases:**

- Convert DWG files to DXF files, and convert DXF files to DWG files.
- Convert DWG/DXF files to DWF, PDF, Image, SWF, EXE files.
- Convert DWF files to DWG/DXF files.
- Plugin for Advanced DWG to PDF Workshop.

For any information about new versions and other products, please visit our web site at [www.dwgpdf.net](http://www.dwgpdf.net)

If you have any additional ideas for features, please contact us at any time, thanks. E-mail: [feature@dwgpdf.net](mailto:feature@dwgpdf.net)



# Top Level Intro

This page is printed before a new  
top-level chapter starts

# Part



## 4 Frequently Asked Questions

### Does it support command line?

Yes, Advanced DWG to PDF Workshop is available in "Advanced DWG to PDF Workshop" and "Advanced DWG to PDF Workshop Pro" versions. This version doesn't support command line, but the "Pro" version supports command line. If you need command line support, please contact us.

### How to place an online order (How to buy)?

There are four easy steps to placing an online order.

Click Here to goto the Buy Now page.

Just click on the "Buy Now" link.

That will take you to the next page where you complete your Contact Information, Billing Information, Payment Information and etc.

Submit Your Order.

After you submit your order, you will receive **your Registration Code in an e-mail message, usually in about 5 to 30 minutes**. You can also select the CD-ROM delivery option when you place your order on our website.

We provide lifetime free technical support and lifetime free future upgrades for our products

### Is the online order form secure?

Yes, it is 100% secure.

### Is there a discount available?

Yes. There's a 10% discount available:

If you are ordering more than one license.

If you are ordering more than one product.

If you are already a registered user of the AcroCAD Software.

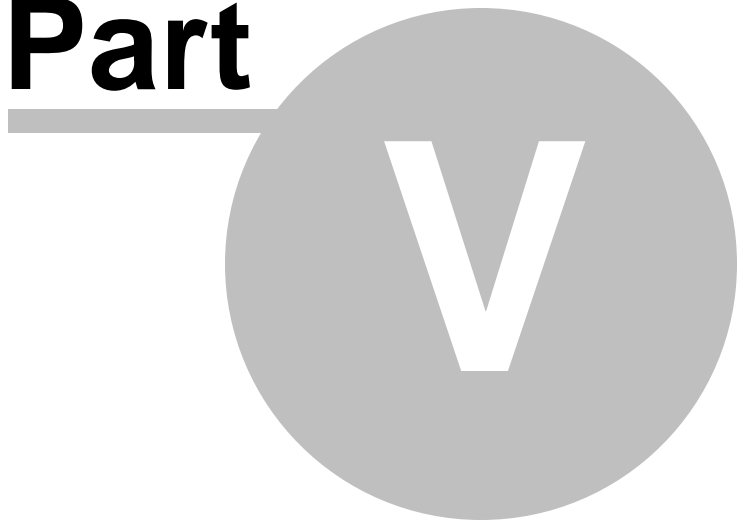
Please visit [www.dwgpdf.net](http://www.dwgpdf.net) for further details on purchasing and the latest information about prices and discounts.

Please feel free to contact us if you have any questions about our products, solutions or services. E-mail: [sales@dwgpdf.net](mailto:sales@dwgpdf.net).

# Top Level Intro

This page is printed before a new  
top-level chapter starts

# Part



## 5 Contact/Feedback

### Report a bug

If you want to report a bug, please e-mail us at [bug@dwgpdf.net](mailto:bug@dwgpdf.net). Thanks.

### Request a feature

Is there a feature or component that you would like to see offered? Your comments and suggestions to improve our software are most welcome. Please send them to [feature@dwgpdf.net](mailto:feature@dwgpdf.net). Thank you very much.

### Submit comments or suggestions

If you have any comments or suggestions about AcroCAD Software, especially if you have good ideas or suggestions, please send them to [support@dwgpdf.net](mailto:support@dwgpdf.net). Thanks.

### Sales feedback

Questions and comments regarding sales conditions may be sent to [sales@dwgpdf.net](mailto:sales@dwgpdf.net).

# Top Level Intro

This page is printed before a new  
top-level chapter starts

**Part**



## 6 Copyright

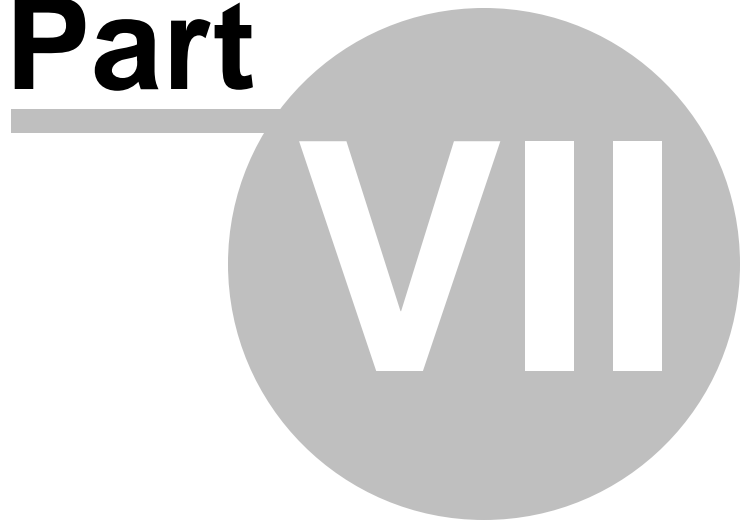
***Copyright (c) 2008 AcroCAD Software, Inc. All Rights Reserved.***

The contents of this program (including the text, images and product help) are copyrighted as a collective work under the copyright laws, and AcroCAD owns a copyright in the selection, coordination, arrangement, and enhancement of such content. You may not modify, remove, delete, augment, add to, publish, transmit, participate in the transfer or sale of, create derivative works from, or in any way exploit any of the content, in whole or in part without AcroCAD's prior written permission. Some of the product names used in this document are trademarks or registered trademarks of their respective holders and are used for identification purposes only.

# Top Level Intro

This page is printed before a new  
top-level chapter starts

# Part



## 7 End User License Agreement

### End User License Agreement

Copyright (c) 2008 DWGPDF.net Software, Inc. All Rights Reserved.

This End User License Agreement is a legal agreement between you (either an individual or an entity) and DWGPDF.net Software, Inc. ("DWGPDF.net") for the DWGPDF.net's software product, which may include user documentation provided in online or electronic form ("SOFTWARE"). By installing, copying, or otherwise using the SOFTWARE, you agree to be bound by the terms of this End User License Agreement.

License & Usage:

=====  
 A. Unregistered Version (Evaluation Version)  
 =====

#### 1. Evaluation and Registration

This is shareware and is provided at no charge to the user for evaluation. Subject to the terms below, you are hereby licensed to use the program for evaluation purposes for the stipulated number of uses. If you use the program after the evaluation period, registration is required.

#### 2. Redistribution of Evaluation Copy

Provided that you are distributing the current unregistered version, you are hereby granted permission to duplicate and distribute the program; give exact copies of the original unregistered version to anyone; and distribute the unregistered version of the program and documentation in its unmodified form via electronic means. There is no charge for any of the above.

You are specifically prohibited from charging, or requesting donations, for any such copies, however made; from distributing the program and/or documentation with other products (commercial or otherwise) without prior written permission.

=====  
 B. Registered Version  
 =====

If you use the program after the evaluation period, registration is required. A single registered copy of the program may either be used by a single person who uses the program himself on one or more computers, or installed on a single computer and used by multiple people, but not both.

=====  
 C. Disclaimer of Warranty  
 =====

THE SOFTWARE IS PROVIDED "AS IS" WITHOUT EXPRESS OR IMPLIED WARRANTIES, INCLUDING WARRANTIES OF MERCHANTABILITY AND FITNESS FOR A PARTICULAR PURPOSE OR NONINFRINGEMENT. THIS SOFTWARE IS PROVIDED GRATUITOUSLY AND, ACCORDINGLY, THE AUTHOR SHALL NOT BE LIABLE UNDER ANY THEORY OR ANY DAMAGES SUFFERED BY YOU OR ANY USER OF THE SOFTWARE.

IN NO EVENT WILL THE AUTHOR BE LIABLE FOR ANY LOSS OF INFORMATION, DAMAGE TO COMPUTER OR MONITOR, ANY INCIDENTAL, SPECIAL, INDIRECT OR SIMILAR DAMAGES, OR CONSEQUENTIAL DAMAGES (INCLUDING DAMAGES FOR LOSS OF BUSINESS PROFITS, BUSINESS INTERRUPTION, LOSS OF BUSINESS INFORMATION AND THE LIKE) ARISING OUT OF THE USE OF OR INABILITY TO USE THE SOFTWARE OR ITS DOCUMENTATION EVEN IF THE AUTHOR HAS BEEN



ADVISED AND WARNED OF THE POSSIBILITY OF SUCH DAMAGES.

Upon using the Software, the user is agreeing with the above statements.

Copyright (c) 2008 DWGPDF.net Software, Inc. (<http://www.dwgpdf.net>) All Rights Reserved.

Endnotes 2... (after index)

Back Cover